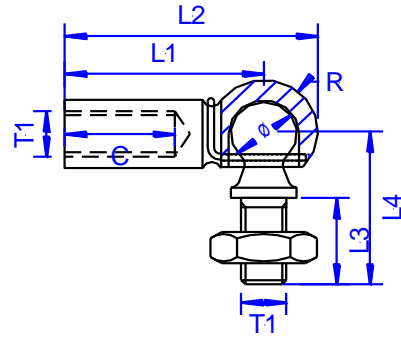


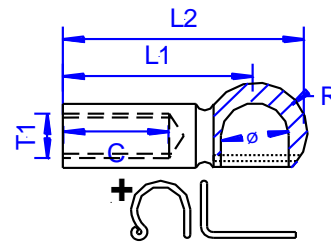
**AGS BALL JOINTS**

code	∅	L1	T1	L3	L4	color
BAA	8	22	M5*0.75	10.2	19.2	zink
BBA	10	22	M6*1.0	12.5	23.5	zink
BGA	10	25	M8.1.25	12.5	23.5	zink
BIA	13	25	M8.1.25	16.5	32.5	zink
BJA	13	30	M8.1.25	16.5	32.5	zink
BKA	16	35	M10*1.5	20	36	zink
BXA	19	45	M14*1.5	28	48	zink
BSA	8	22	M5*0.75	10.2	19.2	stainless
BSB	10	22	M6*1.0	12.5	23.5	stainless
BSG	10	25	M8.1.25	12.5	23.5	stainless
BSI	13	25	M8.1.25	16.5	32.5	stainless
BSJ	13	30	M8.1.25	16.5	32.5	stainless
BSK	16	35	M10*1.5	20	36	stainless
BSX	19	45	M14*1.5	28	48	stainless



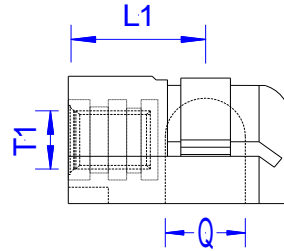
**BALL SOCKETS WITH SAFETY CLIP**

code	∅	L1	T1	Safety Clip	color
BT	8	20	M5*0.8	SL10	zinc
BP	8	22	M5*0.8	SL10	zinc
BS	8	18	M6*1.0	SL10	zinc
BQ	8	22	M6*1.0	SL10	zinc
BA	10	19	M6*1.0	SL10	zinc
BB	10	22	M6*1.0	SL10	zinc
BC	10	22B	M6*1.0	SL10	black
BD	10	25	M6*1.0	SL10	zinc
BE	10	19	M8*1.25	SL10	zinc
BF	10	25	M8*1.25	SL10	zinc
BG	10	25B	M8*1.25	SL10	black
BH	13	19	M6*1.0	SL13	black
BI	13	25	M6*1.0	SL13	zinc
BJ	13	30	M8*1.25	SL13	zinc
BR	13	30	M10*1.5	SL13	zinc
BK	16	35	M10*1.5	SL16	zinc
BV	10	18	M6*1.0	SL10	stainless
BZ	10	25	M6*1.0	SL13	stainless
BY	10	25	M8*1.25	SL13	stainless
BX	13	30	M8*1.25	SL13	stainless
BW		35	M10*1.5	SL13	stainless



**GLASSFILLED NYLON with Brass Thread-Insert**

code	Ø	L1	T1	INSERT	color
BL	10	19	M6*1.0	brass	black
BM	10	19*	M8*1.25	brass flair	black
BN	10	19	M6*1.0	brass	black
BO	10	19*	M8*1.25	brass flair	black



**BALL STUDS**

code	Ø	L3	T1	NUT	color
AH	8	10	M5*1.0	M5*0.8-4.0	zinc
AA	10	0.55"	UNC 5/16-18	no nut	zinc
AI	10	0.75"	UNC 5/16-18	no nut	zinc
AB	10	12	M6*1.0	M6*1.0-5	black
AC	10	20	M6*1.0	M6*1.0-5	zinc
AK	10	14	M8*125	M8*1.25-6.5	zinc
AD	10	16	M8*125	M8*1.25-6.5	zinc
AE	10	20	M8*125	M8*1.25-6.5	zinc
AL	13	16	M8*125	M8*1.25-6.5	zinc
AF	13	20	M8*125	M8*1.25-6.5	zinc
AJ	16	20	M10*1.5	M10*1.5-8.0	zinc
AG	16	25	M10*1.5	M10*1.5-8.0	zinc
AW	10	0.55"	UNC 5/16-18	no nut	stainless
AU	10	0.75"	UNC 5/16-18	no nut	stainless
AZ	10	16	M8*125	M8*1.25-6.5	stainless
AY	13	30	M8*125	M8*1.25-6.5	stainless
AX	16	19	M10*1.5	M10*1.5-8.0	stainless
AV	16	19	M12*1.75	M12*1.75-10.5	stainless

