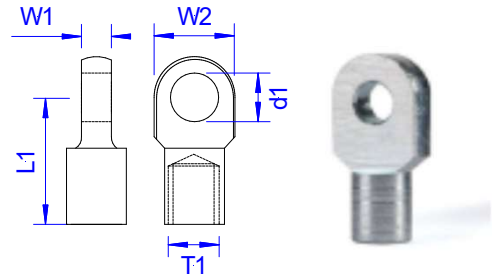
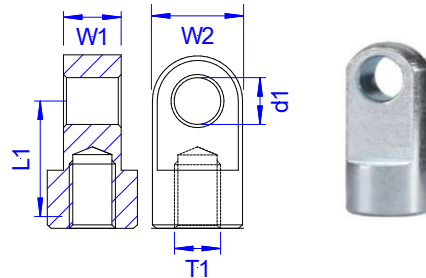


**AGS Hinge eyes ROD and/or CYLINDER side**

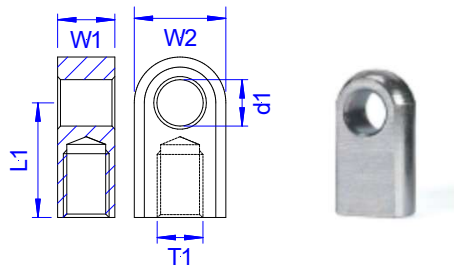
code	W1	Ød1	L1	Material	W2	T1
A	0	0	0	ST/SS	8	M4
EA	3	6.1	15	ST	11	M6
EE	3	6.1	15	ST	11	M8
EB	5	6.1	22	ST/SS	16	M6
EC	5	6.1	25	ST	16	M6
ED	5	8.1	22	ST	19	M6
EF	5	8.1	20	ST/SS	19	M8
EG	5	8.1	22	ST	19	M8
EO	5	10.1	22	ST	19	M8
EH	5	8.1	25	ST	19	M8



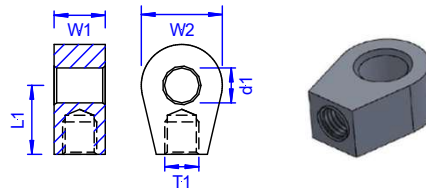
code	W1	Ød1	L1	Material	W2	T1
EV	8	8.1	25	ST	19	M8
	0	0	0	0	0	0
	0	0	0	0	0	0
	0	0	0	0	0	0



code	W1	Ød1	L1	Material	W2	T1
EW	10	8.1	20	ST	16	M6
EM	10	10.1	16	ST	18	M8
EY	10	8.1	16	SS**	18	M8
EN	10	10.1	18	ST	18	M8
EZ	10	8.1	19	SS**	16	M8
EK	10	8.1	20	ST	16	M8
EU	10	10.1	20	ST	18	M8
EI	10	8.1	16	ST	16	M8
EJ	10	8.1	18	ST	16	M8
EQ	12	8.1	20	ST	19	M10
EQ1?	12	10.1	20	ST	19	M10



code	W1	Ød1	L1	Material	W2	T1
A	0	0	0	ZK	16	M8
A	0	0	0	ST	19	M8
ES	12	10.2	16	ZK	19	M10
ER	12	8.1	16	ZK	19	M10



code	W1	Ød1	L1	Material	W2	T1
A	0	0	0	ZK	18	M10
A	0	0	0	ZK	18	M10
ET	18	10.1	25	ZK	18	M10
EL	18	8.1	25	ZK	18	M8

